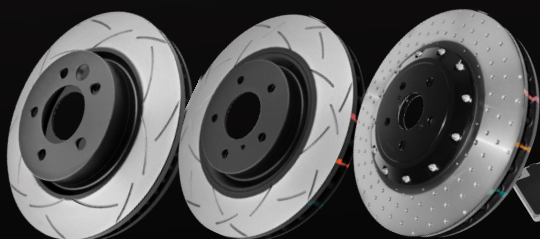


dba

DISC BRAKES AUSTRALIA

NEW PRODUCT UPDATE

//PRESS RELEASE
JUNE 2022



STREET SERIES

4000 SERIES

5000 SERIES

STREET
SERIES

STREET
PERFORMANCE

XTREME
PERFORMANCE

BRAKE
CALIPER

BRAKE
SHOES

BRAKE
CYLINDER



FOR FURTHER INFORMATION, VISIT DBA.COM.AU

MEET OUR NEW FAMILY MEMBER...

STREET

SERIES

HYDRAULIC
BRAKE CYLINDER



- FROM THE **#1** TRUSTED ROTOR BRAND
- INITIAL RELEASE INCLUDES 80 MASTER CYLINDERS & 240 WHEEL CYLINDERS
- OE-REPLACEMENT FOR EVERYDAY USE



Features:

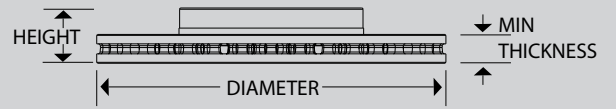
- ▶ Direct replacement, no modifications required
- ▶ Restores original quality and performance without compromise
- ▶ Manufactured in accordance with intl. quality standards to OE specifications

RECOMMENDED FOR USE WITH



FOR MORE INFO &
APPLICATIONS REFER
DBA PART FINDER AT
DBA.COM.AU

dba
DISC BRAKES AUSTRALIA



CHEVROLET SILVERADO [J61 "4 PISTON CALIPER"]

1

Part No : **DBA3064E**

Barcode : **9316391458735**



SUITABLE FOR USE WITH

Series: 1500

DESCRIPTION & DIMENSIONS (mm)

Surface Design	Enshield
Vent Design	Vented
Diameter	343
Height	58.6
Thickness	30
Min/Max Thickness	28
Centre Hole	78.6
No. Bolts	6
Position	Front
Year Manufactured	03/2020 - on



STREETSERIES

CHEVROLET SILVERADO [J61]

2

Part No : **DBA3065E**

Barcode : **9316391458742**



SUITABLE FOR USE WITH

Series: 1500

DESCRIPTION & DIMENSIONS (mm)

Surface Design	Enshield
Vent Design	Vented
Diameter	345
Height	52.9
Thickness	20
Min/Max Thickness	18
Centre Hole	78.6
No. Bolts	6
Position	Rear
Year Manufactured	03/2020 - on



STREETSERIES

CITROEN C4 / PEUGEOT 307

3

Part No : **DBA3067E**

Barcode : **9316391458766**



SUITABLE FOR USE WITH

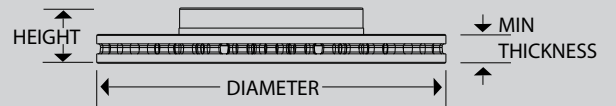
Series: C4 / 307

DESCRIPTION & DIMENSIONS (mm)

Surface Design	Enshield
Vent Design	Solid
Diameter	249
Height	67.1
Thickness	9
Min/Max Thickness	8
Centre Hole	Hub
No. Bolts	4
Position	Rear
Year Manufactured	04/2005 - 2011 2001 - 2009



STREETSERIES



FORD ECONOVAN SWB / MAZDA E1800 & E2000 SWB

4

Part No : **DBA2638E**

Barcode : **9316391458674**



SUITABLE FOR USE WITH

Series: JH / Chass SKW08 & SKW0E

DESCRIPTION & DIMENSIONS (mm)

Surface Design	Enshield
Vent Design	Vented
Diameter	255
Height	59
Thickness	24
Min/Max Thickness	22
Centre Hole	72
No. Bolts	5
Position	Front
Year Manufactured	03/2003 - 07/2006/ 10/1999 - 2008



IVECO DAILY

5

Part No : **DBA3066E**

Barcode : **9316391458759**



SUITABLE FOR USE WITH

Series: 35S13 & 35S14

DESCRIPTION & DIMENSIONS (mm)

Surface Design	Enshield
Vent Design	Vented
Diameter	276
Height	72.4
Thickness	22
Min/Max Thickness	19
Centre Hole	73
No. Bolts	5
Position	Front
Year Manufactured	05/2005 - 01/2006



IVECO DAILY

6

Part No : **DBA3069E**

Barcode : **9316391458773**



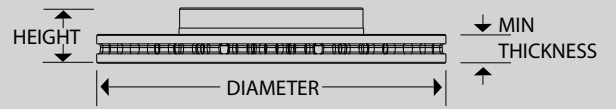
SUITABLE FOR USE WITH

Series: 35S13 & 35S14

DESCRIPTION & DIMENSIONS (mm)

Surface Design	Enshield
Vent Design	Solid
Diameter	276
Height	69.4
Thickness	16
Min/Max Thickness	13
Centre Hole	73
No. Bolts	5
Position	Rear
Year Manufactured	05/2005 - 01/2006





IVECO DAILY

Part No : **DBA3071E**

Barcode : **9316391458797**

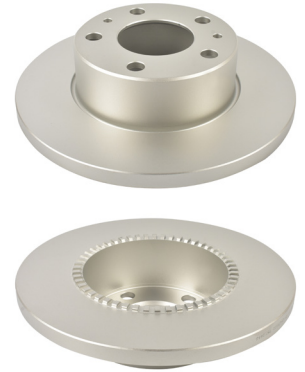


SUITABLE FOR USE WITH

Series: 35S13 & 35S14 [With ABS]

DESCRIPTION & DIMENSIONS (mm)

Surface Design	Enshield
Vent Design	Solid
Diameter	276
Height	69.4
Thickness	16
Min/Max Thickness	13
Centre Hole	73
No. Bolts	5
Position	Rear
Year Manufactured	05/2005 - 01/2006



7

LDV V80

Part No : **DBA3446E**

Barcode : **9316391458858**



SUITABLE FOR USE WITH

Series: K1

DESCRIPTION & DIMENSIONS (mm)

Surface Design	Enshield
Vent Design	Vented
Diameter	294
Height	70.7
Thickness	24
Min/Max Thickness	22
Centre Hole	80
No. Bolts	5
Position	Front
Year Manufactured	01/2013 - on



8

LDV V80

Part No : **DBA3295E**

Barcode : **9316391458841**



SUITABLE FOR USE WITH

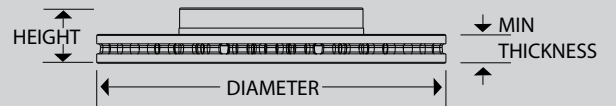
Series: K1

DESCRIPTION & DIMENSIONS (mm)

Surface Design	Enshield
Vent Design	Solid
Diameter	304
Height	101.8
Thickness	16
Min/Max Thickness	14
Centre Hole	85
No. Bolts	5
Position	Rear
Year Manufactured	01/2013-on



9



MERCEDES SPRINTER [WITHOUT ELECTRIC PARK BRAKE]

Part No : **DBA3055E**

Barcode : **9316391458681**



SUITABLE FOR USE WITH

Series: Chass W907 & W910

DESCRIPTION & DIMENSIONS (mm)

Surface Design	Enshield
Vent Design	Solid
Diameter	298
Height	71.2
Thickness	18
Min/Max Thickness	16
Centre Hole	85
No. Bolts	6
Position	Rear
Year Manufactured	2018 - on



STREETSERIES

10

MERCEDES VITO

Part No : **DBA3074E**

Barcode : **9316391458810**

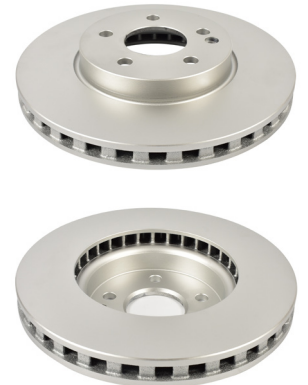


SUITABLE FOR USE WITH

Series: Chass 447

DESCRIPTION & DIMENSIONS (mm)

Surface Design	Enshield
Vent Design	Vented
Diameter	300
Height	51.9
Thickness	28
Min/Max Thickness	25
Centre Hole	67
No. Bolts	5
Position	Front
Year Manufactured	07/2015 - 2020



STREETSERIES

11

PORSCHE 911 [CARRERA]

Part No : **DBA30830EX**

Barcode : **9316391458827**



SUITABLE FOR USE WITH

Series: 993

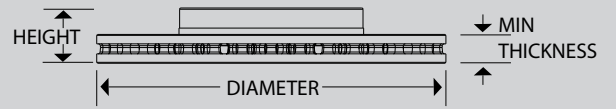
DESCRIPTION & DIMENSIONS (mm)

Surface Design	Enshield
Vent Design	Vented
Diameter	298.8
Height	65
Thickness	24
Min/Max Thickness	22
Centre Hole	103
No. Bolts	5
Position	Rear
Year Manufactured	01/1991 - 1998



STREETSERIES

12



VOLVO V40

Part No : **DBA3087E**

Barcode : **9316391458834**



SUITABLE FOR USE WITH

Series: V40 [With Lock Down C/Sunk Hole]

DESCRIPTION & DIMENSIONS (mm)

Surface Design	Enshield
Vent Design	Solid
Diameter	280
Height	41
Thickness	11
Min/Max Thickness	9
Centre Hole	63.5
No. Bolts	5
Position	Rear
Year Manufactured	07/2013 - 06/2018





**Jeep Grand Cherokee Trackhawk
6.2L 522KW 2017 - on**

Part No : DB15039SP

Barcode : 9316391456038

STREET
PERFORMANCE

DESCRIPTION & DIMENSIONS (mm)

<i>Set Contains</i>	LH Inner + RH Inner + 2 Outer Pads		
<i>Pad Overall Length</i>	189.77	<i>Pad Overall Length</i>	
<i>Pad Overall Height</i>	94.7	<i>Pad Overall Height</i>	
<i>Pad Thickness</i>	16.7	<i>Pad Thickness</i>	
<i>Position</i>	Front		
<i>Year</i>	2017 - on		

