



DISC BRAKES AUSTRALIA

NEW PRODUCT UPDATE

//PRESS RELEASE
FEBRUARY 2023



STREETSERIES

4000SERIES

5000SERIES



STREET SERIES



STREET PERFORMANCE



XTREME PERFORMANCE



BRAKE CALIPER



BRAKE SHOES

BRAKE CYLINDER

BRAKE HOSE

FOR FURTHER INFORMATION, VISIT DBA.COM.AU

**THE ORIGINAL - DON'T SETTLE
FOR SECOND BEST**



4000SERIES



- **Built, not bought** - Australia's largest brake rotor manufacturer
- Preferred choice by **8 in 10 Australian workshops**
- Backed by **over 40 years of experience**
- A myriad of **technical innovations**, including

 Kangaroo Paw Ventilation

 T3 bi-directional slot

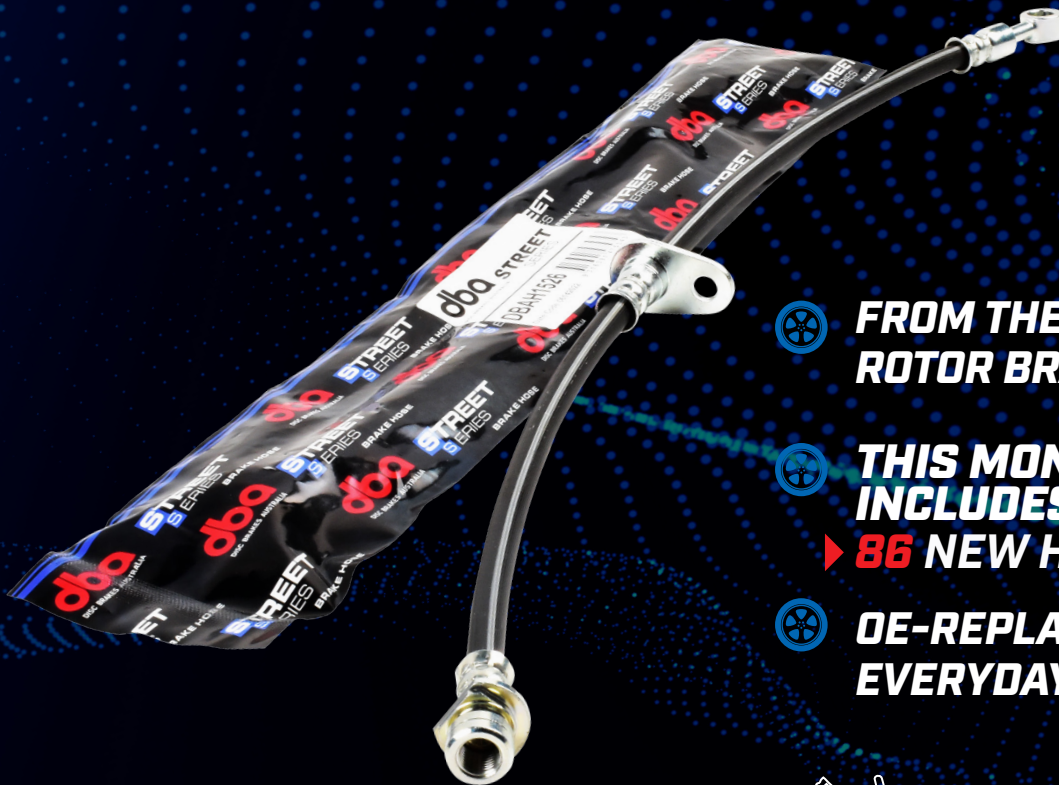
 Thermographic Heat Paint

 Thermal Stability Profiling

dba
DISC BRAKES AUSTRALIA

EXPANDING OUR HYDRAULICS RANGE...

STREET SERIES BRAKE HOSE



**FROM THE #1 TRUSTED
ROTOR BRAND**



**THIS MONTH'S RELEASE
INCLUDES:**

▶ **86 NEW HOSES**



**OE-REPLACEMENT FOR
EVERYDAY USE**

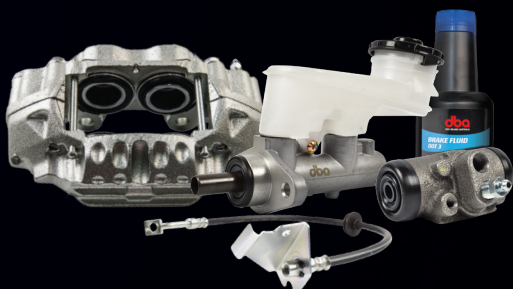


Features:

- ▶ Precision-engineered for exact fitment
- ▶ Durable EPDM rubber and zinc-coated fittings for extra durability
- ▶ Reduced volumetric expansion for faster fluid transfer
- ▶ Includes copper washers, brackets, moulded plastic guards and wire clips where applicable

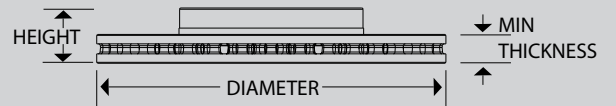
RECOMMENDED FOR USE WITH

STREET
SERIES HYDRAULICS



FOR MORE INFO &
APPLICATIONS VISIT
DBA.COM.AU

dba
DISC BRAKES AUSTRALIA



**BMW 540I,630I,640I,730D,740D/E/I/
LI,745E,750I/LI,M340I,M550I & X5**

Part No : DBA3144EL

Barcode : 9316391470614



DESCRIPTION & DIMENSIONS (mm)	
Surface Design	Enshield
Vent Design	Vented
Diameter	374
Height	66.3
Thickness	36
Min/Max Thickness	34.4
Centre Hole	67
No. Bolts	5
Position	Front Left
Year Manufactured	2015 - On



1

**BMW 540I,630I,640I,730D,740D/E/I/
LI,745E,750I/LI,M340I,M550I & X5**

Part No : DBA3144ER

Barcode : 9316391470607



DESCRIPTION & DIMENSIONS (mm)	
Surface Design	Enshield
Vent Design	Vented
Diameter	374
Height	66.3
Thickness	36
Min/Max Thickness	34.4
Centre Hole	67
No. Bolts	5
Position	Front Right
Year Manufactured	2015-On



2

**GENESIS G80 SERIES RG RWD 2.2L TD
& 2.5L TURBO**

Part No : DBA3799E

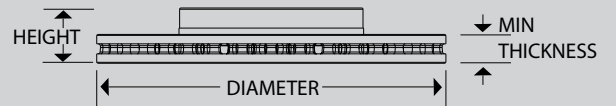
Barcode : 9316391482013



DESCRIPTION & DIMENSIONS (mm)	
Surface Design	Enshield
Vent Design	Solid
Diameter	325
Height	32
Thickness	12
Min/Max Thickness	10
Centre Hole	69
No. Bolts	5
Position	Rear
Year Manufactured	08/2020 - On



3



GENESIS G80 SERIES RG RWD 2.5L TURBO

4

Part No : **DBA3798E**

Barcode : **9316391482006**



DESCRIPTION & DIMENSIONS (mm)	
Surface Design	Enshield
Vent Design	Vented
Diameter	345
Height	56.5
Thickness	30
Min/Max Thickness	28
Centre Hole	69
No. Bolts	5
Position	Front
Year Manufactured	08/2020 - On



HYUNDAI I30 GD / VELOSTER / ELANTRA MD KONA OS SERIES 2.0L FWD

5

Part No : **DBA2479E**

Barcode : **9316391473127**



DESCRIPTION & DIMENSIONS (mm)	
Surface Design	Enshield
Vent Design	Solid
Diameter	262
Height	45
Thickness	10
Min/Max Thickness	8.4
Centre Hole	76
No. Bolts	5
Position	Rear
Year Manufactured	05/2016-on 09/2017 -on



KIA K2900 SERIES PU3

6

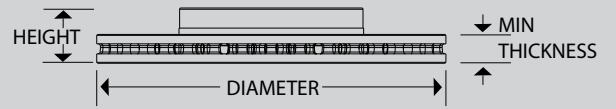
Part No : **DBA3348E**

Barcode : **9316391439031**



DESCRIPTION & DIMENSIONS (mm)	
Surface Design	Enshield
Vent Design	Vented
Diameter	277.8
Height	26.9
Thickness	26.2
Min/Max Thickness	24
Centre Hole	92
No. Bolts	5
Position	Front
Year Manufactured	12/2009 - 01/2013





MERCEDES AMG C63> 205,190 & 231

7

Part No : **DBA43359**

Barcode : **9316391456717**



DESCRIPTION & DIMENSIONS (mm)	
Surface Design	HD
Vent Design	Vented
Diameter	360
Height	50.5
Thickness	26
Min/Max Thickness	24
Centre Hole	67
No. Bolts	5
Position	Rear
Year Manufactured	2012 - On



PORSCHE CAYENNE 9Y

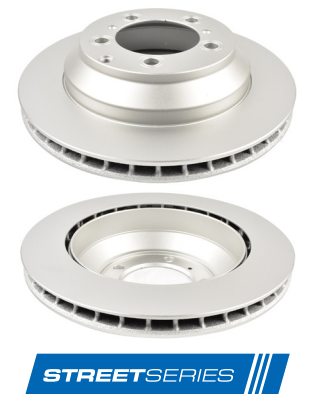
8

Part No : **DBA3085E**

Barcode : **9316391470539**



DESCRIPTION & DIMENSIONS (mm)	
Surface Design	Enshield
Vent Design	Vented
Diameter	330
Height	73.6
Thickness	26
Min/Max Thickness	24
Centre Hole	98
No. Bolts	5
Position	Rear
Year Manufactured	03/2018 - On



TOYOTA KLUGER GSU70R GSU75R 3.5L V6 & AXUH78R HYBRID 2.5L

9

Part No : **DBA3189E**

Barcode : **9316391473158**



DESCRIPTION & DIMENSIONS (mm)	
Surface Design	Enshield
Vent Design	Vented
Diameter	338
Height	39.6
Thickness	18
Min/Max Thickness	16.5
Centre Hole	62
No. Bolts	5
Position	Rear
Year Manufactured	03/2021 - On

