

dba

DISC BRAKES AUSTRALIA

NEW PRODUCT UPDATE

//PRESS RELEASE
MARCH 2023



STREET SERIES

4000 SERIES

5000 SERIES

STREET SERIES

STREET PERFORMANCE

XTREME PERFORMANCE

BRAKE CALIPER

BRAKE SHOES

BRAKE CYLINDER

BRAKE HOSE

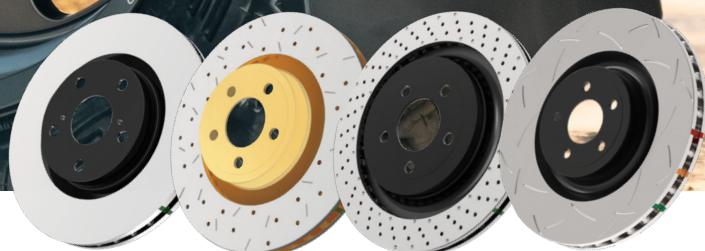


FOR FURTHER INFORMATION, VISIT DBA.COM.AU

**THE ORIGINAL - DON'T SETTLE
FOR SECOND BEST**



4000SERIES



HD

**XS
GOLD**

XD

T3

- **Built, not bought** - Australia's largest brake rotor manufacturer
- Preferred choice by **8 in 10 Australian workshops**
- Backed by **over 40 years of experience**
- A myriad of **technical innovations**, including



Kangaroo Paw Ventilation



T3 bi-directional slot



Thermographic Heat Paint

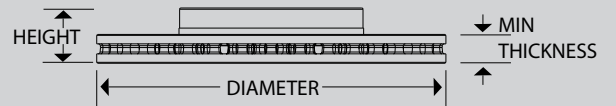


Thermal Stability Profiling

**FOR MORE INFO & WHERE TO BUY VISIT
DBA.COM.AU**

dba

DISC BRAKES AUSTRALIA



ALFA ROMEO GIULIETTA 1.4L

Part No : **DBA2295E**

Barcode : **9316391472397**



DESCRIPTION & DIMENSIONS (mm)	
Surface Design	Enshield
Vent Design	Solid
Diameter	264
Height	40.5
Thickness	10
Min/Max Thickness	8
Centre Hole	70
No. Bolts	5
Position	Rear
Year Manufactured	2011 - On



1

BMW 530D G31 07/ -> & IX3 M-SPORT

Part No : **DBA3796E**

Barcode : **9316391478443**



DESCRIPTION & DIMENSIONS (mm)	
Surface Design	Enshield
Vent Design	Vented
Diameter	348
Height	66.2
Thickness	30
Min/Max Thickness	28.4
Centre Hole	67
No. Bolts	5
Position	Front
Year Manufactured	07/2021-On



2

**CITROEN C4 SHINE 1.2 THP
1.2L TURBO 06/2021-ON /
PEUGEOT 2008 GT 1.2L TURBO 06/
2020-ON**

Part No : **DBA3781E**

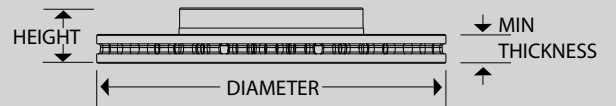
Barcode : **9316391473233**



DESCRIPTION & DIMENSIONS (mm)	
Surface Design	Enshield
Vent Design	Solid
Diameter	249
Height	35
Thickness	10
Min/Max Thickness	8
Centre Hole	71
No. Bolts	4
Position	Rear
Year Manufactured	06/2021-on & 06/2020-on



3



FORD PUMA 2XXER 1.0L TURBO

4

Part No : **DBA3468E**

Barcode : **9316391477057**



DESCRIPTION & DIMENSIONS (mm)	
Surface Design	Enshield
Vent Design	Vented
Diameter	278
Height	43.9
Thickness	25
Min/Max Thickness	23
Centre Hole	63.5
No. Bolts	5
Position	Front
Year Manufactured	05/2020 - On



FORD TRANSIT CUSTOM 290S & 300S 2.0L TURBO

5

Part No : **DBA3794E**

Barcode : **9316391477088**



DESCRIPTION & DIMENSIONS (mm)	
Surface Design	Enshield
Vent Design	Vented
Diameter	288
Height	55.4
Thickness	33
Min/Max Thickness	30
Centre Hole	93
No. Bolts	5
Position	Front
Year Manufactured	2016 - On



HONDA ACCORD VTI-LX HYBRID SERIES CV 2.0L

6

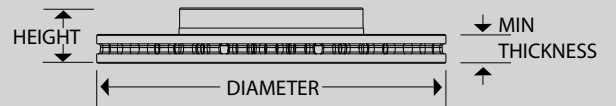
Part No : **DBA3778E**

Barcode : **9316391473219**



DESCRIPTION & DIMENSIONS (mm)	
Surface Design	Enshield
Vent Design	Vented
Diameter	312
Height	47.1
Thickness	25
Min/Max Thickness	23
Centre Hole	64.15
No. Bolts	5
Position	Front
Year Manufactured	10/2019-on





HYUNDAI IONIQ 5 NE & SONATA N-LINE DN 2.5L TURBO

Part No : DBA3782E

Barcode : 9316391473240



DESCRIPTION & DIMENSIONS (mm)

Surface Design	Enshield
Vent Design	Vented
Diameter	345
Height	48
Thickness	30
Min/Max Thickness	28
Centre Hole	69
No. Bolts	5
Position	Front
Year Manufactured	07/19-on & 12/20-on



STREETSERIES

7

HYUNDAI KONA 2.0L FWD & KIA SELTOS 2.0L FWD

Part No : DBA3767E

Barcode : 9316391478405



DESCRIPTION & DIMENSIONS (mm)

Surface Design	Enshield
Vent Design	Solid
Diameter	284
Height	45
Thickness	10
Min/Max Thickness	8.4
Centre Hole	76
No. Bolts	5
Position	Rear
Year Manufactured	11/2020 - On & 10/2019 - On



STREETSERIES

8

HYUNDAI STARIA & STARIA LOAD 2.2L TD & 3.5L PETROL SERIES US FWD & AWD

Part No : DBA3771E

Barcode : 9316391472588



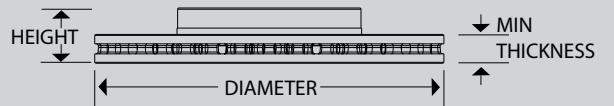
DESCRIPTION & DIMENSIONS (mm)

Surface Design	Enshield
Vent Design	Vented
Diameter	325
Height	35
Thickness	20
Min/Max Thickness	18
Centre Hole	96.3
No. Bolts	6
Position	Rear
Year Manufactured	06/2021 - On



STREETSERIES

9



MAZDA MX-30 E35 FULL ELECTRIC SUV

10

Part No : **DBA3606E**

Barcode : **9316391472380**



DESCRIPTION & DIMENSIONS (mm)	
Surface Design	Enshield
Vent Design	Vented
Diameter	326
Height	46.5
Thickness	25
Min/Max Thickness	23
Centre Hole	68
No. Bolts	5
Position	Front
Year Manufactured	04/2021 - On



STREETSERIES

MERCEDES A35 AMG 177 2.0L T

11

Part No : **DBA37880EX**

Barcode : **9316391473271**



DESCRIPTION & DIMENSIONS (mm)	
Surface Design	OE X/Drilled
Vent Design	Vented
Diameter	350
Height	46
Thickness	32
Min/Max Thickness	30
Centre Hole	67
No. Bolts	5
Position	Front
Year Manufactured	06/2019-On



STREETSERIES

MERCEDES A45 AMG,A180,A250 177 2019-> CLA250 C118 01/2020-> EQA ELECTRIC N243 2021-> GLA250,GLB200,GLB250 247 2019->

12

Part No : **DBA3779E**

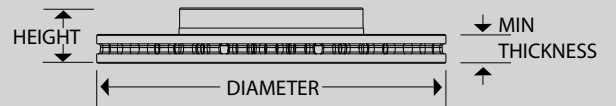
Barcode : **9316391472540**



DESCRIPTION & DIMENSIONS (mm)	
Surface Design	Enshield
Vent Design	Vented
Diameter	320
Height	45.6
Thickness	12
Min/Max Thickness	10.3
Centre Hole	67
No. Bolts	5
Position	Rear
Year Manufactured	2019 - On



STREETSERIES



MERCEDES BENZ C200

13

Part No : **DBA264E**

Barcode : **9316391473141**



DESCRIPTION & DIMENSIONS (mm)	
Surface Design	Enshield
Vent Design	Vented
Diameter	284
Height	43.5
Thickness	22
Min/Max Thickness	19.4
Centre Hole	67
No. Bolts	5
Position	Front
Year Manufactured	1985-1995



STREETSERIES

MERCEDES CLA35 AMG C118 & GLA35 AMG H247

14

Part No : **DBA34700EX**

Barcode : **9316391477064**



DESCRIPTION & DIMENSIONS (mm)	
Surface Design	OE X/Drilled
Vent Design	Vented
Diameter	350
Height	52.2
Thickness	32
Min/Max Thickness	30
Centre Hole	67
No. Bolts	5
Position	Front
Year Manufactured	07/2019 - On & 07/2020 - On



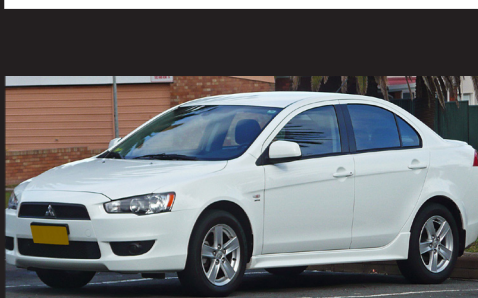
STREETSERIES

MITSUBISHI LANCER

15

Part No : **DBA404E**

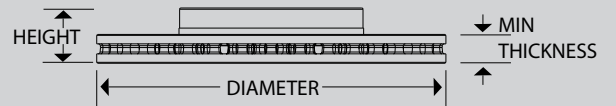
Barcode : **9316391473295**



DESCRIPTION & DIMENSIONS (mm)	
Surface Design	Enshield
Vent Design	Solid
Diameter	262
Height	60
Thickness	10
Min/Max Thickness	8.4
Centre Hole	90
No. Bolts	4
Position	Rear
Year Manufactured	1994-2007



STREETSERIES



NISSAN JUKE F16 1.0L ST&ST+

16

Part No : **DBA1968**

Barcode : **9316391477019**



DESCRIPTION & DIMENSIONS (mm)	
Surface Design	Standard Drum
Vent Design	Drum
Diameter	228.5
Height	64
Thickness	
Min/Max Thickness	
Centre Hole	68
No. Bolts	5
Position	Rear
Year Manufactured	02/2020 - ON



STREETSERIES

RENAULT MASTER SERIES X62 RWD

17

Part No : **DBA3787E**

Barcode : **9316391478429**



DESCRIPTION & DIMENSIONS (mm)	
Surface Design	Enshield
Vent Design	Solid
Diameter	304.9
Height	71.5
Thickness	12
Min/Max Thickness	10
Centre Hole	91
No. Bolts	5
Position	Rear
Year Manufactured	09/2013-on



STREETSERIES

TOYOTA SUPRA JZA80R 2 POT CALIPERS

18

Part No : **DBA719E**

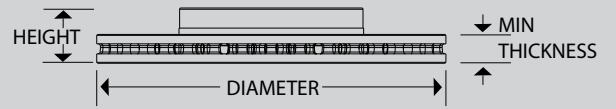
Barcode : **9316391477095**



DESCRIPTION & DIMENSIONS (mm)	
Surface Design	Enshield
Vent Design	Vented
Diameter	324
Height	67.5
Thickness	16
Min/Max Thickness	15
Centre Hole	62
No. Bolts	5
Position	Rear
Year Manufactured	1993-1998



STREETSERIES



**TOYOTA YARIS CROSS SERIES MXPJ10R & MXPJ15R
1.5L HYBRID & SERIES MXPB10R 1.5L PETROL**

19

Part No : DBA3774E

Barcode : 9316391472564



DESCRIPTION & DIMENSIONS (mm)	
Surface Design	Enshield
Vent Design	Vented
Diameter	283
Height	46.3
Thickness	22
Min/Max Thickness	19
Centre Hole	62
No. Bolts	5
Position	Front
Year Manufactured	05/2020-on



STREETSERIES

**TOYOTA YARIS CROSS SERIES MXPJ10R 1.5L HYBRID &
SERIES MXPB10R 1.5L PETROL**

20

Part No : DBA3773E

Barcode : 9316391472557



DESCRIPTION & DIMENSIONS (mm)	
Surface Design	Enshield
Vent Design	Solid
Diameter	265
Height	37.8
Thickness	10
Min/Max Thickness	8.5
Centre Hole	62
No. Bolts	5
Position	Rear
Year Manufactured	05/2020-on



STREETSERIES

**TOYOTA YARIS SERIES MXPJ10R 1.5L HYBRID &
MXPA10R 1.5L PETROL**

21

Part No : DBA3772E

Barcode : 9316391472571



DESCRIPTION & DIMENSIONS (mm)	
Surface Design	Enshield
Vent Design	Vented
Diameter	255
Height	46.2
Thickness	22
Min/Max Thickness	19
Centre Hole	55
No. Bolts	4
Position	Front
Year Manufactured	05/2020 - On



STREETSERIES